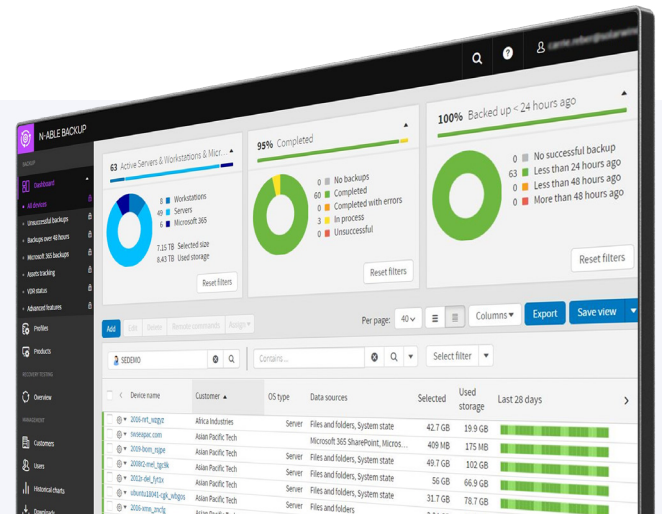


Ventura Tech Data Protect

Cloud-first data protection as a service

Ventura Tech Data Protect™ provides streamlined, cloud-first backup, disaster recovery, and archiving for physical and virtual servers, workstations, and Microsoft 365®* data, managed from a single web-based dashboard. Ventura Tech Data Protect was designed to reduce the cost and complexity of data protection—without sacrificing speed or reliability.

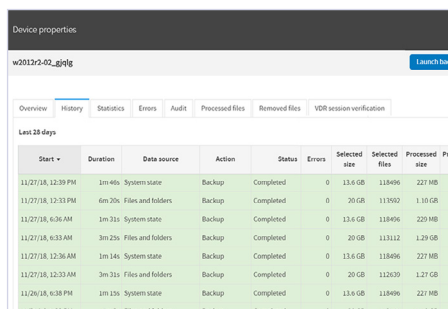


Flexible disaster recovery options

- Get multiple recovery options from a single product while enjoying the administrative ease of Cove's cloud-first SaaS architecture.
- Leverage fast file- and folder-level recovery and full system recovery with bare-metal restore or virtual disaster recovery.
- Create and manage standby images for better RTOs.
- Recover at LAN speed via the LocalSpeedVault option if needed.
- Test and verify backup recoverability on an automated schedule with recovery testing.

Built for the cloud

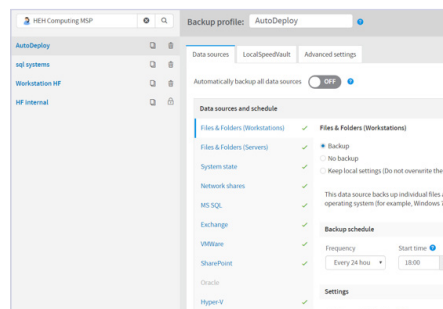
- Backing up to the cloud isn't an afterthought with Cove—it was built for that. Our proprietary architecture moves up to 60 times less data than traditional image backup products.
- Cove's TrueDelta deduplication and efficient architecture make daily backups small and lightweight, allowing you to back up more often.
- Cloud storage (including archiving) is included in your price, and you can keep backup data in region with 30 data centers worldwide.
- AES 256-bit encryption protects backup files in transit and at rest.



The table shows backup history with columns for Start, Duration, Data source, Action, Status, Errors, Selected size, Selected files, Processed size, and Progress.

Start	Duration	Data source	Action	Status	Errors	Selected size	Selected files	Processed size	Pro
11/27/18, 12:39 PM	1m 46s	System state	Backup	Completed	0	13.6 GB	118496	227 MB	
11/27/18, 12:33 PM	6m 20s	Files and folders	Backup	Completed	0	20 GB	113002	1.10 GB	
11/27/18, 6:36 AM	1m 31s	System state	Backup	Completed	0	13.6 GB	118496	225 MB	
11/27/18, 6:33 AM	3m 25s	Files and folders	Backup	Completed	0	20 GB	113112	1.29 GB	
11/27/18, 12:36 AM	1m 14s	System state	Backup	Completed	0	13.6 GB	118496	227 MB	
11/27/18, 12:33 AM	3m 31s	Files and folders	Backup	Completed	0	20 GB	112830	1.27 GB	
11/26/18, 6:38 PM	1m 12s	System state	Backup	Completed	0	13.6 GB	118496	227 MB	

TrueDelta technology sends a fraction of the data over the WAN during daily backups.



The configuration page shows settings for 'AutoDeploy' under 'LocalSpeedVault'. It includes sections for 'Data sources and schedule' and 'Files & Folders (Workstations)'. The 'Backup schedule' is set to 'Every 24 hours' with a start time of '18:00'.

Define profiles for device types for auto-deployment to help save time and increase consistency.

No hardware hassles

- Ventura Tech Data Protect is a SaaS application –no need to patch, upgrade, or maintain a local application server.
- Appliance-free, direct-to-cloud backups help save you time and money.
- No need to buy, provision, or manage local data storage for your backups. Storage in our private cloud is included.
- Keep an optional local copy of your data using an existing network share or other hardware with LocalSpeedVault.

Features at a glance

End-to-end security

- **AES 256-bit encryption** is used to help secure files that remain encrypted in transit and at rest.
- **Create your own private key** or have one generated for you during deployment.
- **ISO-certified data centers** are located worldwide, with additional certifications by location.
- **Role-level access** lets you grant limited access to backups as needed, secured with mandatory two-factor authentication.

Microsoft 365 data protection*

(standalone and integrated into N-central)

- **Recovery of deleted items** helps you keep control of your customers' data in Microsoft 365.
- **Manage Microsoft 365 backups** from the same dashboard as server and workstation backups
- **Seven years' data retention** to help your customers meet regulatory requirements.
- **Storage in our global private cloud** is included. Fair-use policies apply.*

Efficiency and ease of use

- Simplify backup management and spend less time on routine tasks.
- Manage server, workstation, and Microsoft 365* backups and recoveries for multiple locations or customers from a single dashboard.
- Automate backup deployment with device profiles to help provide consistent configurations.
- Manage by exception with customizable views and reporting.

TrueDelta technology

- **Back up only what you need** by ignoring temporary or transient data, browser caches, and similar items. Cove's incremental backups move up to 60x less data than with image backup products.
- **Process backup jobs efficiently** with Cove's unique architecture, only sub-block-level data that has actually changed is processed. No need for the inefficiencies of full disk scanning and false positive changes introduced by defrag and file moves.
- **Move data efficiently** with a dramatically lower change rate than image backup tools. No need for resource-intensive block-level deduplication.
- **WAN optimization** further minimizes bandwidth usage; bandwidth throttling is available during business hours for slow network connections.

* Ventura Tech Data Protect for Microsoft 365 includes Exchange™, OneDrive®, and SharePoint data.

Fair use policy includes up to 1TB of Microsoft 365 data per unique user.

Data centers around the world

- **Backup storage** in our private cloud is included in your price.
- **Keep data in region**, with 30 data centers located across four continents.
- **ISO 27001, ISO 9001**, and other certifications depending on your chosen data center.
- **Using one vendor** for your backup software and cloud storage helps simplify billing and support.

Country	HIPAA	ISO27001	ISO9001	NIST 800-53	PCI DSS	SOC 1 TYPE II	SOC 2 TYPE II
Australia		x			x	x	x
Belgium		x					
Brazil	x		x		x	x	x
Denmark		x			x	x	x
France	x		x		x	x	x
Germany	x		x		x	x	x
Italy	x		x		x	x	x
Netherlands		x	x		x	x	x
Norway		x	x				
Portugal	x		x		x	x	x
S. Africa			x				
Spain		x	x		x		
Sweden		x	x				
Switzerland		x	x		x	x	x
UK		x	x		x	x	x
Canada	x	x		x	x	x	x
USA	x	x		x	x	x	x

** Other location-specific certifications exist, above table contains most requested

Backup data is stored in worldwide data centers built for security and regulatory compliance.

Supported operating systems

Windows® 8, 8.1, 10 and 11

Windows Server® 2012,
2012 R2
2016 (limited)
2019 (limited)
2022 (limited)

macOS® 10.15 Catalina
11 Big Sur
12 Monterey
13 Ventura

GNU/Linux® CentOS 5, 6, 7
Debian 5, 6, 7, 8
OpenSUSE 11, 12

Data sources for backup

The Backup Manager handles individual files and directories as well as complex systems, such as:

- Microsoft SQL Server®
- VMware®
- Microsoft Hyper-V®
- Microsoft Exchange™
- Oracle®
- MySQL®

You can also back up and recover the configuration of your operating system (the “System State” data source) and Microsoft 365. The integrated version also supports Microsoft 365 data protection.

Additional features

Available on all supported operating systems

- **Multilingual support.** You can use the Backup Manager in any of these seven languages: English, Dutch, Russian, German, Spanish, French, or Portuguese.
- **Optional custom branding.** When using the standalone edition, you can brand the Backup Manager for your end users, removing references to N-able. Use a custom name, logo, color scheme, and icons.
- **Remote management.** You can send remote commands to the Backup Managers on your end users' devices.
- **Proxy connections.** The Backup Manager can work from behind a proxy server.
- **Email reports.** Receive email updates on status or recent backup and recovery sessions. This action can be done by an end user in the Backup Manager or remotely, by a service provider or a system administrator. Send emailed reports directly to your customers as needed.
- **Bandwidth usage control.** Help ensure your bandwidth usage never exceeds a specified limit.

Management Console (Web) Backup Manager	https://backup.management/ Client-side backup application available in English, Dutch, Russian, German, Spanish, French, Portuguese, and Norwegian
Virtual Drive	Optionally installed with the Backup Manager, this allows self-service access to backed-up data via a local file browser
Bare-Metal Recovery	Create bootable USB or CD media to recover your system directly to bare hardware without a prior OS installation
Server Tool	Self-service tool for managing seed uploads or downloads from almost any location
Storage Node Installer	Optional installer for a self-hosted storage node

“Simple to use, enterprise-class features, very fair on the storage limits, and no gimmicks. 24/7 support. Above all, I saved a client’s burning building with this backup service. You can schedule backups nightly, twice a day, or down to every hour if you choose”

– Jeff Olejnik
Newport Solutions

“The cloud management console includes great monitoring and alerting capabilities for my entire customer base. Very knowledgeable 24/7 support. Proven to have easily recovered clients from ransomware attacks”

– Mark Chesher
The Data Vault

“It’s crazy how little data is sent in daily backups using Ventura Tech Data Protect. We’re backing up GBs of data, yet by using the LocalSpeedVault and TrueDelta, we’re only transferring a couple of hundred MBs. Backups that used to take eight hours are now complete in ten minutes.”

– Kyle Orr
Orr Systems